



WARDS
SEA KING

**OUTBOARD
MOTOR**

PARTS CATALOG

1974

MW-80

6 SPECIAL

B.I.A. CERTIFIED BRAKE H.P. AT 5000 R.P.M.

**MODEL
VWB-52000**

Printed in U.S.A.

9/73

SEA KING—SOLD EXCLUSIVELY BY **MONTGOMERY WARD**

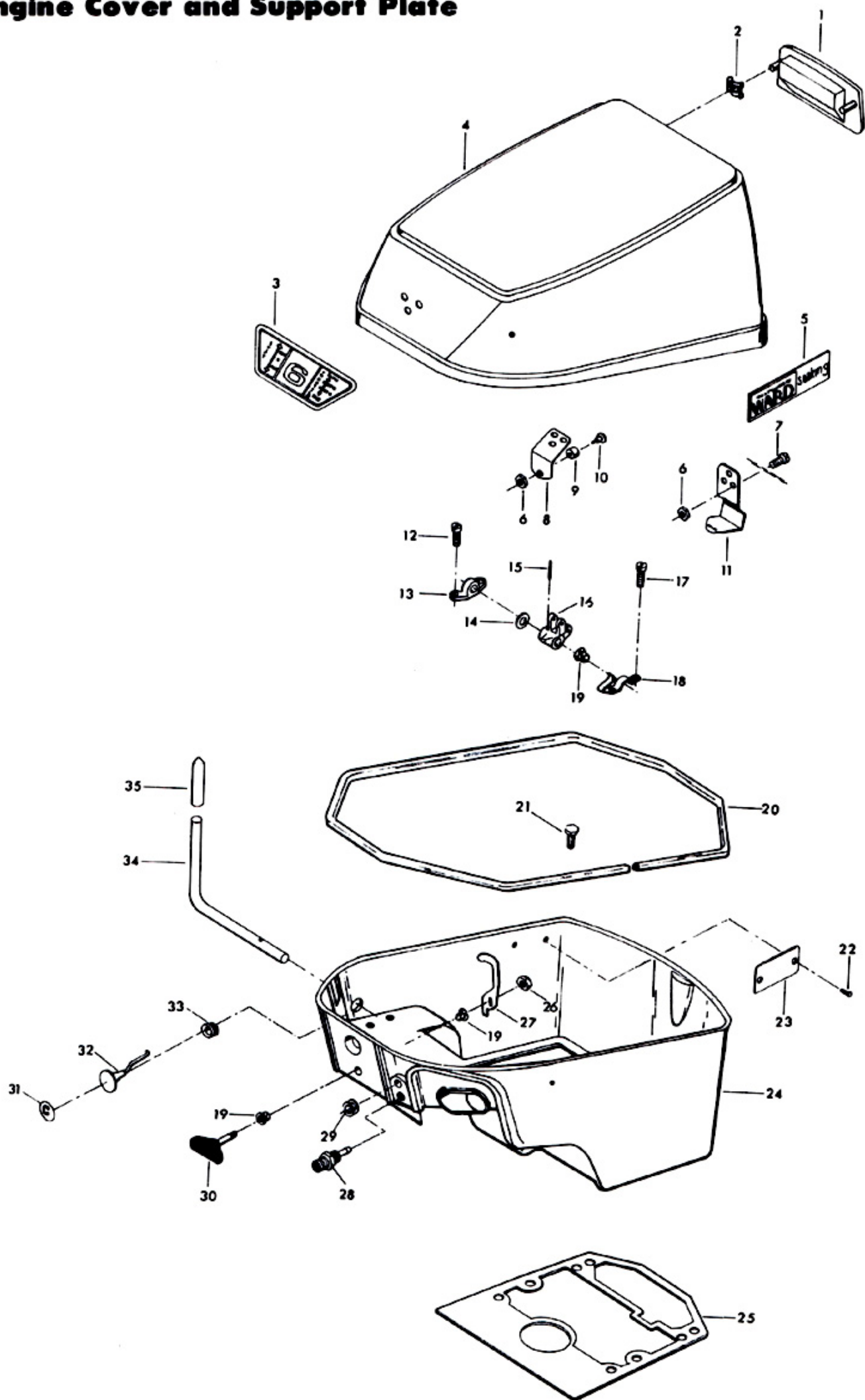
Engine Cover and Support Plate

ILLUS. NO.	PART NO.	QTY.	DESCRIPTION
1	272269-1	1	Handle, tilt
2	9037	2	Fastener
3	470894	1	Indicator, speed control
4	S470712	1	Engine cover w/bracket and retainer
5	470392	2	Decal
6	7011	6	Elastic stop nut, 10 - 24
7	1475	6	Fill hd screw, 10 - 24 x 1/2
8	2A469774	1	Bracket, cover latch w/screws, nuts and rollers
9	92759	1	Roller
10	269316	1	Roller shaft
11	A469480	1	Retainer, engine cover w/screws and nuts
12	1574	2	Fill hd screw, 1/4 - 20 x 9/16
13	318818	1	Bearing
14	154415	1	Washer
15	8547	1	Spring pin
16	318876-1	1	Gear shift lever
17	1068	2	Fill hd screw, 10 - 24 x 7/16
18	318895	1	Spring shift detent
19	307818	3	Bearing
20	286756	1	Packing, support plate
21	1689	2	Hex cap screw, 1/4 - 20 x 1/2
22	1293	2	Drive screw, 2 x 3/16
23	A197395-1	1	Plate, identification w/screws
24	A459038	1	Support plate w/eyelet
25	318453-1	1	Gasket, leg mounting
26	7006	1	Stop nut, 5/16 - 18
27	286777	1	Cam, cover latch
28	197767-1	1	Bushing, fuel line
29	901504-1	1	Grommet
30	A286469	1	Knob, cover latch
31	458677	1	Insert, choke knob
32	A318503	1	Choke rod w/knob and insert
33	318504	1	Grommet, choke rod
34	459876	1	Handle, gear shift lever
35	459137	1	Grip

NOTE

To obtain identification plate, order part number A197395-1. Order for identification plate must be accompanied by a notarized statement from the dealer, customer and statement from a law enforcement agency verifying that the plate is lost or damaged beyond repair. This statement must also include name and address of owner and model and serial number of motor.

Engine Cover and Support Plate



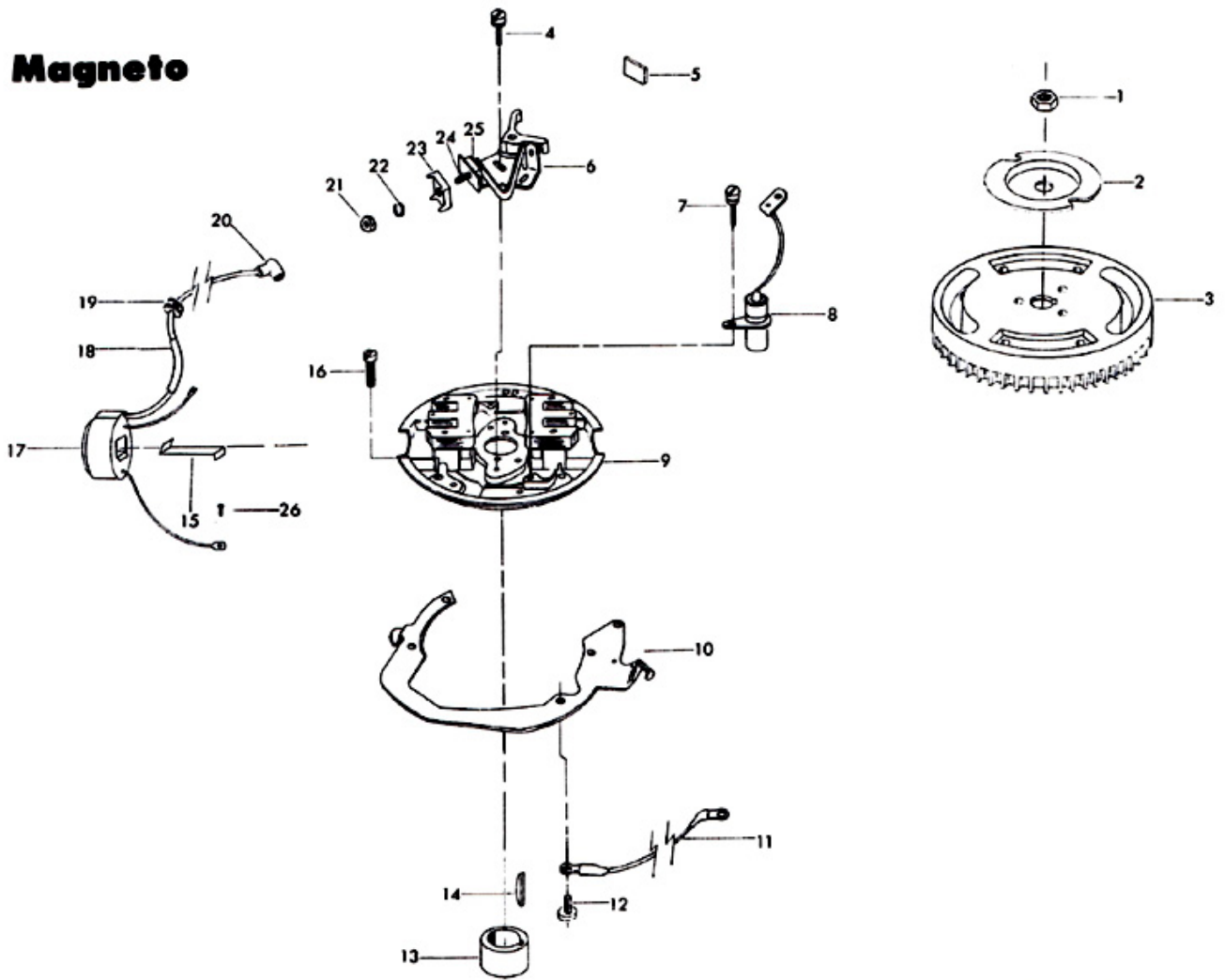
Magneto

ILLUS. NO.	PART NO.	QTY.	DESCRIPTION
1	1352	1	Hex nut, 7/16 - 20
2	901456-1	1	Emergency starter collar
3	318097	1	Flywheel
4	12170	4	Contact screw w/lockwasher
5	12228	1	Cam wiper felt
6	12153	2	Breaker point set
7	12083	2	Condenser screw w/lockwasher
8	12181-1	2	Condenser
9	12343	1	Stator plate w/laminations
10	459192	1	Throttle cam
11	289664	1	Wire, stator ground
12	1075	4	Fill hd screw, 10 - 24 x 1/2
13	59002	1	Magneto breaker cam
14	54498	1	Magneto key
15	12146	2	Coil wedge spring
16	1090	4	Fill hd screw w/lockwasher, 10 - 24 x 9/16
17	A12231	2	Coil w/lead wire
18	12141	1	Sleeve, high tension lead
19	12088	4	Grommet
20	K750-1	2	Sparkie w/spring
21	12127	2	Stud nut
22	8055	2	Lockwasher
23	12128	2	Insulator, outside
24	12142	2	Connection stud
25	12129	2	Insulator, inside
26	12114	2	Screw, coil ground terminal
	12091	1	Lead wire marker, top (not shown)
		1	Magneto complete, order component parts
		1	Stator plate complete, order component parts

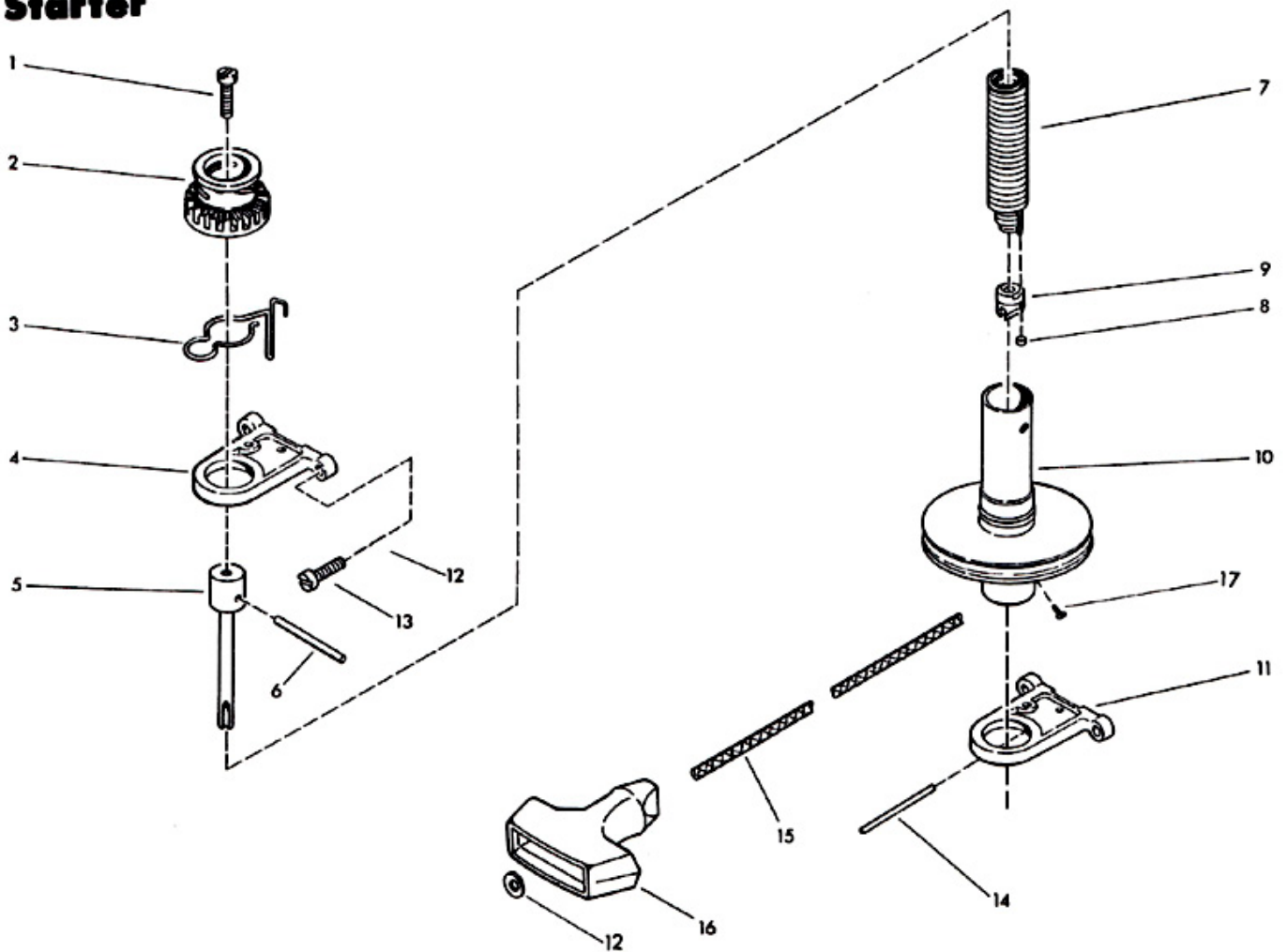
Starter

ILLUS. NO.	PART NO.	QTY.	DESCRIPTION
1	1089	1	Fill hd screw, 10 - 24 x 9/16
2	456674	1	Gear, starter pinion
3	901424-1	1	Starter pinion spring
4	K317427	1	Bracket, starter upper
5	286710	1	Arbor, starter spring
6	40425	1	Starter pinion pin
7	A286970	1	Starter rewind spring w/end and retainer
8	286930	1	End, starter spring
9	286737-1	1	Retainer, starter rewind spring
10	2A459239	1	Starter spool w/shaft
11	K317427	1	Bracket, starter lower w/spring pin
12	8018	1	Plain washer
13	1107	4	Fill hd screw, 1/4 - 20 x 3/4
14	1875	1	Spring pin, starter bracket
15	409232	1	Starter rope
16	286132	1	Handle, starter rope
17	1500	1	Round hd screw, 4 - 1/4

Magneto



Starter



Fuel System

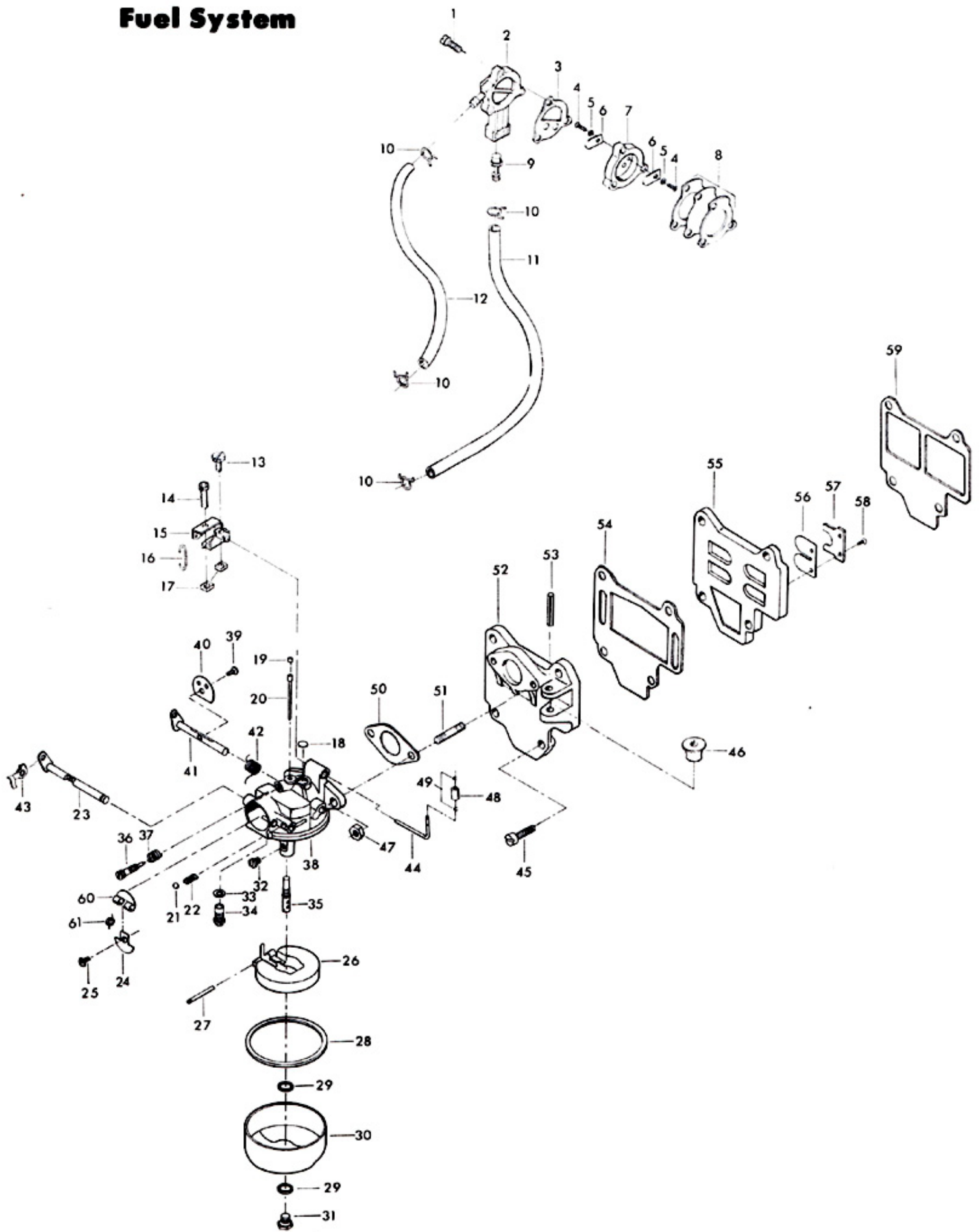
ILLUS. NO.	PART NO.	QTY.	DESCRIPTION
1	1069	3	Fill hd screw, 10 - 24 x 1 1/16
2	901746-1	1	Fuel pump cover
3	24748	1	Gasket, fuel pump cover
4	1286	2	Pan hd screw, 4 - 40 x 3/16
5	8003	2	Plain washer
6	18160-1	2	Reed, fuel pump
7	A24757-3	1	Fuel pump reed plate w/reeds and screws
8	2A24747-1	1	Fuel pump diaphragm w/gaskets
9	901811	1	Fuel pump filter
10	2706772	4	Hose clamp
11	A71754	1	Fuel line w/clamps
12	A24754-1	1	Fuel line w/clamps
13	1558	1	Hex slot hd screw, 10 - 24 x 3/8
14	1834	1	Fill hd screw, 10 - 24 x 7/8
15	A286190-1	1	Arm, carburetor follower
16	66193	1	Throttle link
17	1365	2	Square nut, 10 - 24
18	* 02531	1	Body channel welch plug
19	* 010588	1	Body channel cup plug
20	016120	1	Bypass tube
21	04784	1	Choke friction ball
22	08805	1	Choke friction spring
23	015720	1	Choke shaft and lever
24	015367	1	Choke shutter
25	010280	1	Choke shutter retaining screw and lockwasher
26	013554	1	Float
27	* 013944	1	Float lever pin
28	015623	1	Fuel bowl gasket
29	02510	2	Fuel bowl retaining screw gasket
30	015366	1	Fuel bowl
31	013945	1	Fuel bowl retaining screw
32	* 014635	1	Main fuel jet (.034)
33	010165	1	Inlet seat gasket
34	* 010790	1	Inlet needle, seat and gasket
35	* 015722	1	Main nozzle
36	* 015520	1	Idle mixture screw
37	* 011103	1	Idle mixture screw spring
38		1	Carburetor complete, order 429061
39	* 08942	1	Throttle shutter retaining screw and lockwasher
40	08502	1	Throttle shutter
41	015718	1	Throttle shaft and lever
42	* 015526	1	Throttle shaft return spring
43	341384	1	Retainer, choke rod
44	318316	1	Throttle cam follower
45	1201	4	Fill hd screw, 1/4 - 20 x 3/4
46	286435-3	1	Pulley starter rope
47	1490	2	Hex nut, 1/4 - 20
48	318318	1	Roller, throttle cam follower
49	78410	2	Retainer
50	18906	1	Carburetor gasket
51	2788004	2	Stud, carburetor
52	2A341167-1	1	Manifold w/studs, pulley, washer and spring pin
53	1876	1	Spring pin
54	318168	1	Gasket, manifold
55	A387158	1	Reed plate w/reeds, stops and screws
56	31160-1	2	Reed
57	459161	2	Reed stop
58	1298	4	Round hd screw, 6 - 32 x 1/4
59	318159	1	Gasket, reed plate
60	015368	1	Choke relief valve
61	016161	1	Choke relief valve spring
	429061	1	Carburetor complete, C06A
	* 10006	1	Gasket set (not shown)
	10008	1	Repair parts kit (not shown)

Asterisk (*) indicates contents of repair parts kit.

OPTIONAL SIZE MAIN FUEL JET (Use Only At Altitudes Indicated)

	<u>Sea Level-3000 Ft.</u>	<u>3000-6000 Ft.</u>	<u>6000 and Up</u>
Size	.034	.032	.030
Part Number	014635	014634	015207

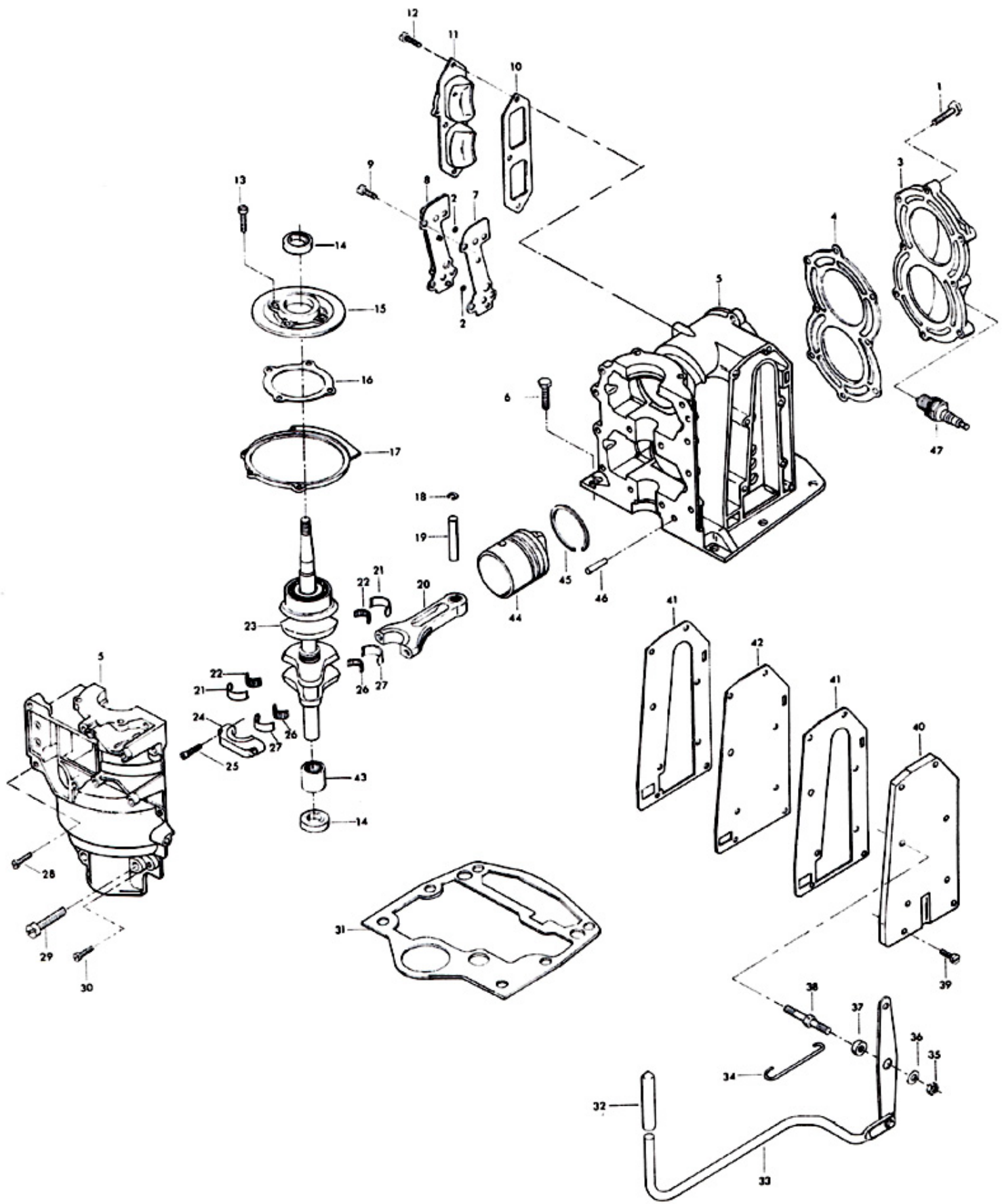
Fuel System



Power Head

ILLUS. NO.	PART NO.	QTY.	DESCRIPTION
1	901938-1	8	Screw, cylinder head
2	429811	2	Screen, cylinder drain
3	318518-3	1	Cylinder head
4	318529	1	Cylinder head gasket
5	A429010-1	1	Cylinder w/crankcase cover, dowel pins, screws and stud
6	1823	6	Hex hd cap screw, 5/16 - 18 x 1
7	429472	1	Gasket, cylinder drain cover
8	A429471	1	Cylinder drain cover w/check valves and screens
9	1239	4	Hex slot hd screw, 1/4 - 20 x 5/8
10	318223	1	Gasket, transfer port cover
11	318222	1	Transfer port cover
12	1502	3	Hex hd screw, 1/4 - 20 x 5/8
13	1111	4	Fill hd screw, 1/4 - 20 x 7/8
14	141118	2	Seal, crankshaft
15	A318144	1	Cage, crankshaft bearing w/seal
16	286277	1	Gasket, crankshaft bearing cage
17	73082	1	Magneto stator ring
18	31410	3	Retaining ring, piston pin
19	7017	2	Piston pin
20	2A430016	2	Connecting rod w/cap and screws
21	A286655	1	Main bearing liner set (2 per set)
22	286571	1	Center main bearing rollers (26 per set)
23	A318018-1	1	Crankshaft w/upper main bearing. Upper main bearing not sold separately. Contact area service manager for authorization to return crankshaft for bearing replacement. Order 2A430016 connecting rod
24			
25	286624	4	Connecting rod screw
26	318228	2	Connecting rod, roller set (24 per set)
27	A318229	2	Connecting rod liner set (2 per set)
28	1111	2	Fill hd screw, 1/4 - 20 x 7/8
29	1798	4	Fill hd screw, 5/16 - 18 x 1 1/4
30	1107	6	Fill hd screw, 1/4 - 20 x 3/4
31	318279-1	1	Gasket, cylinder mounting
32	459137	1	Grip
33	2A459688	1	Throttle rod w/rivet, wave washer and lever
34	318509-2	1	Link, throttle cam
35	7023	1	Hex lock nut, 1/4 - 20
36	8061	1	Internal tooth lockwasher
37	269319	1	Bearing, throttle rod
38	459822	1	Stud, throttle lever
39	1240	7	Hex slot hd screw, 1/4 - 20 x 7/8
40	318152	1	Cover, exhaust
41	318154	2	Gasket, exhaust cover
42	318151	1	Plate, exhaust
43	343014	1	Bearing, crankshaft lower main
44	A429015	2	Piston
45	A317260	2	Piston ring set (3 per set)
46	8559	2	Dowel pin
47	S174227	2	Spark plug (L-4-J)
	G1004-1	1	Gasket set (not shown)
	K-737	1	Engine touch-up paint spray bomb Frost White Flat
	K-747	1	Engine touch-up paint spray bomb Blue Enamel

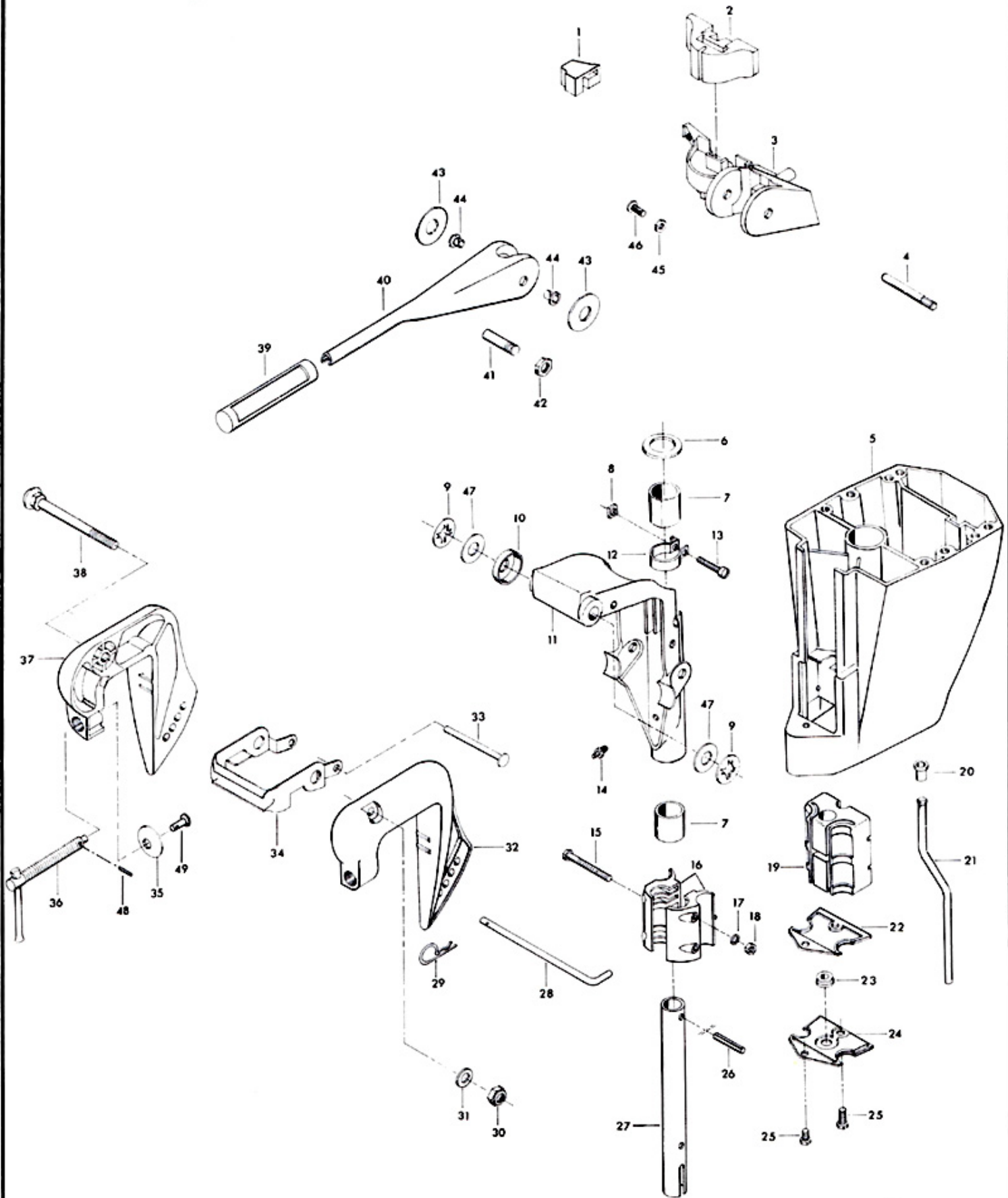
Power Head



Motor Leg

ILLUS. NO.	PART NO.	QTY.	DESCRIPTION
1	318539	1	Bumper
2	318347	1	Shock mount upper
3	459582	1	Steering arm
4	459639	1	Pin, steering handle
5	K429133	1	Motor leg w/welch plug
6	286011	1	Washer, swivel bracket
7	286169	2	Bearing, swivel bracket
8	1608	1	Square nut, 1/4 - 20
9	459286	2	Washer, stern bracket
10	459542	1	Spacer, swivel bracket
11	A459072	1	Swivel bracket w/grease fitting
12	286573-1	1	Steering friction clamp
13	1820	1	Fill hd screw, 1/4 - 20 x 1 3/8
14	213274	1	Grease fitting
15	A1844	2	Hex bolt, 1/4 - 20 x 2 3/8
16	318956	2	Bracket, shock mount lower
17	8083	2	Spring lockwasher
18	1341	2	Hex nut, 1/4 - 20
19	318346	1	Shock mount lower
20	318342	1	Seal, inlet water line upper
21	409244	1	Inlet water line
22	318967	1	Gasket, shock mount plate
23	318861	1	Seal, shock mount plate
24	318963	1	Plate, shock mount lower
25	1689	2	Finished hex bolt, 1/4 - 20 x 1/2
26	1805	1	Spring pin
27	318019	1	Kingpin
28	459113	1	Lock bar
29	1985	1	Hair pin cotter
30	1631	1	Stop nut, 3/8 - 16
31	8075	1	Plain washer
32	197532-2	1	Stern bracket, port
33	459620	1	Pin, carrying handle
34	459647	1	Carrying handle
35	24074	2	Clamp screw foot
36	A28073-1	2	Clamp screw w/foot
37	197032-1	1	Stern Bracket, starboard
38	459037	1	Stern bracket pivot bolt
39	390137	1	Grip, steering handle
40	459079	1	Steering handle
41	459695	1	Sleeve, steering handle
42	1354	1	Hex nut, 1/2 - 20
43	286220	2	Washer, steering handle
44	197813	2	Bearing
45	7011	1	Stop nut, 10 - 24
46	1089	1	Fill hd screw, 10 - 24 x 9/16
47	1989	2	Plain washer
48	8536	2	Spring Pin
49	66480	2	Stud

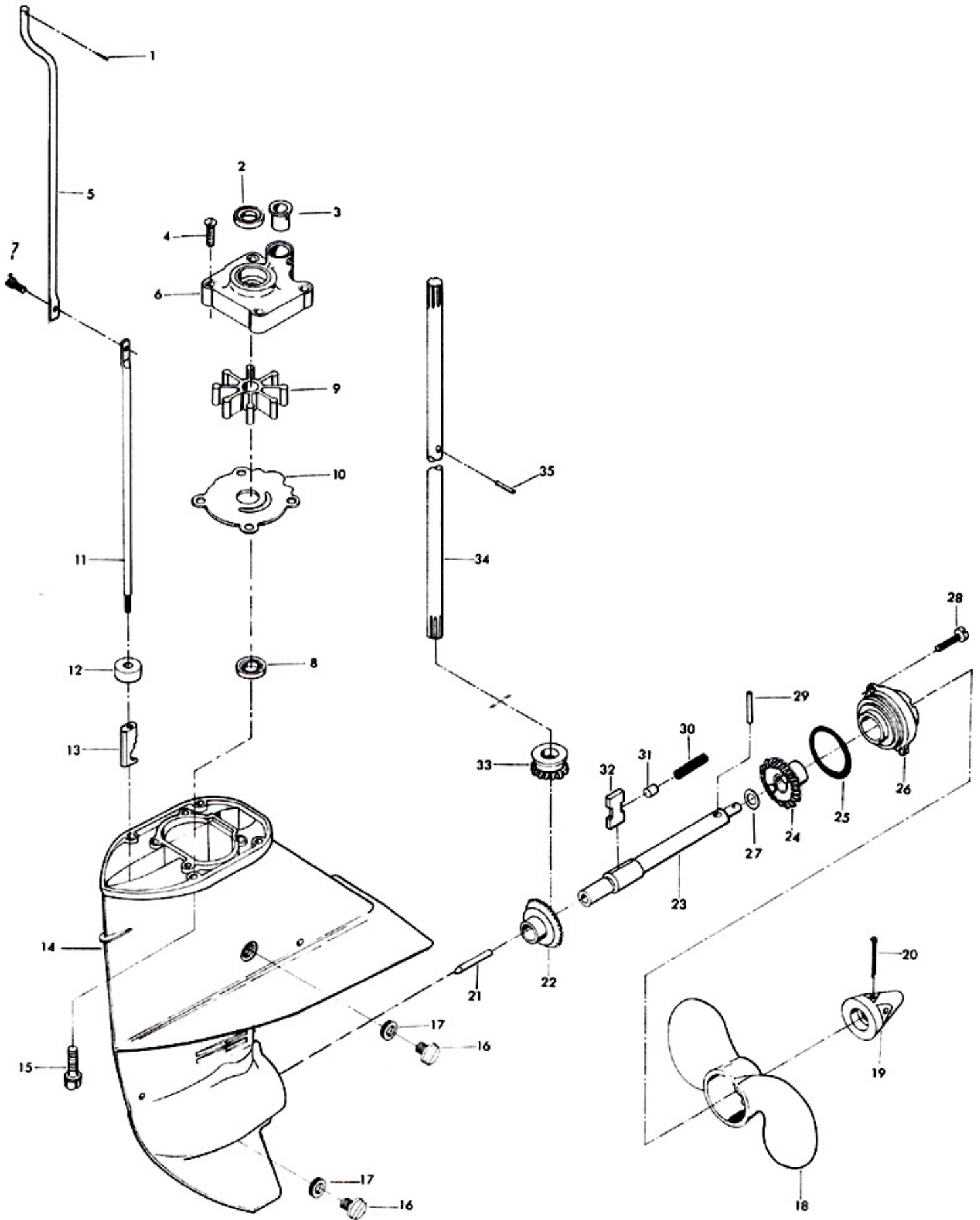
Motor Leg



Gear Housing

ILLUS. NO.	PART NO.	QTY.	DESCRIPTION
1	1850	1	Spring pin
2	318307	1	Seal, water pump
3	55914	1	Seal, inlet water line
4	1150	4	Flat hd screw, 1/4 - 20 x 1 1/8
5	318615	1	Gear shift rod upper
6	A387060-1	1	Water pump body w/seal
7	1976	1	Socket hd screw w/lockwasher, 10 - 24 x 1/2
8	318307	1	Seal, driveshaft
9	50065-1	1	Water pump impeller
10	341562	1	Water pump back plate
11	286705	1	Gear shift rod lower
12	318618	1	Seal, gear shift rod lower
13	459721	1	Clutch shift cam
14	A459054	1	Gear housing w/bearings, plug and washer
15	430732	8	Hex cap screw, 1/4 - 20 x 1
16	50109	2	Gear housing plug
17	8077	2	Nyltite washer
18	P459	1	Propeller (Accessory Item)
19	A286094	1	Propeller nut w/cotter pin
20	1846	1	Cotter pin
21	901728	1	Clutch shift pin
22	A318023-3	1	Bevel gear w/bearing
23	459098	1	Propeller shaft
24	A318023-3	1	Bevel gear w/bearing
25	286305	1	Seal, propeller shaft bearing cage
26	2A318298-1	1	Propeller shaft bearing cage w/bearing and seal
27	317717	1	Washer
28	1802	2	Fill hd screw, 1/4 - 20 x 9/16
29	A459101	1	Propeller pin, pack of 3
30	409719	1	Clutch spring
31	318372	1	Pin, clutch guide
32	409521	1	Clutch
33	318266	1	Gear, bevel pinion
34	318128	1	Driveshaft
35	50563	1	Water pump impeller drive pin

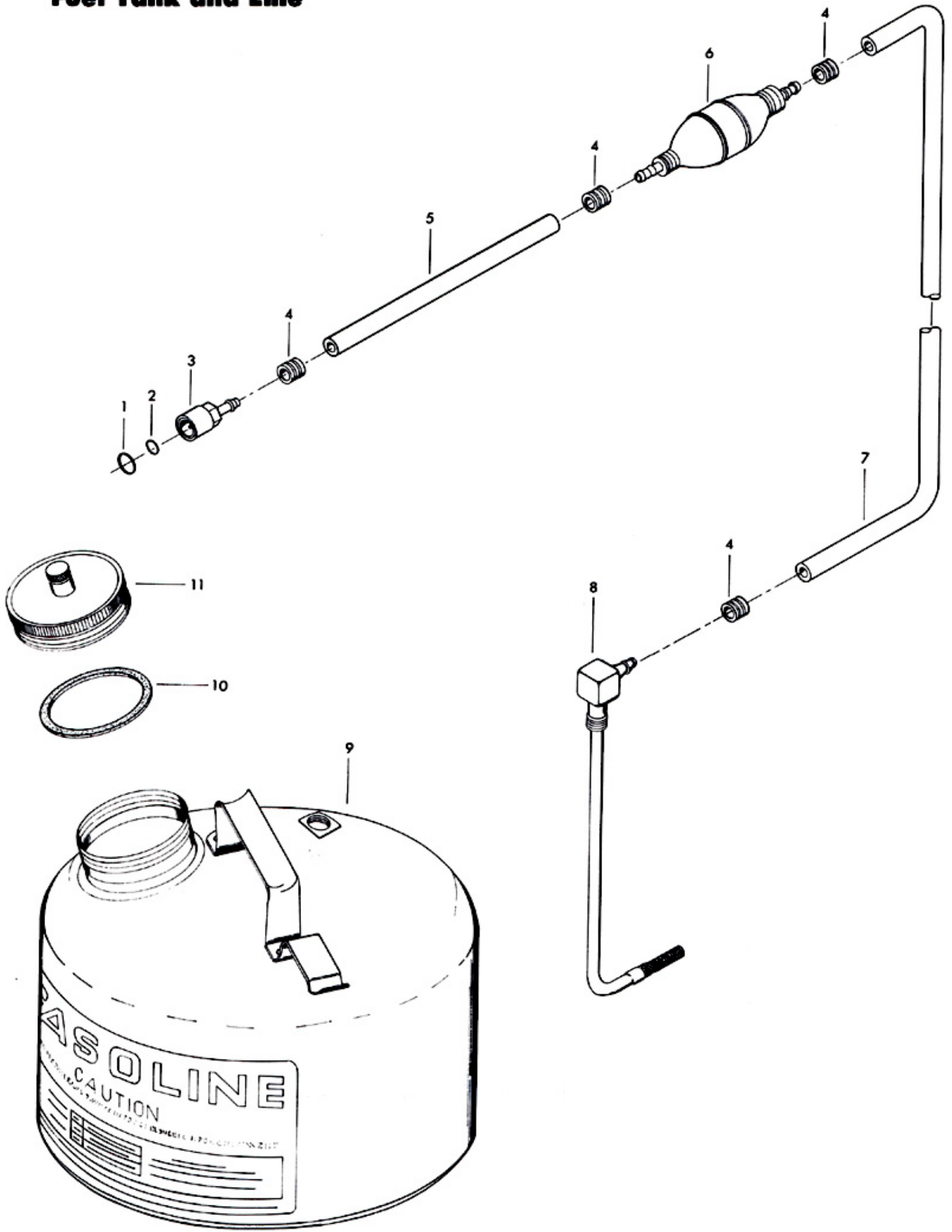
Gear Housing



Fuel Tank and Line

ILLUS. NO.	PART NO.	QTY.	DESCRIPTION
1	213342	1	Seal, fuel line coupler
2	213735	1	Seal, fuel line coupler
3	197787-2	1	Fuel line coupler
4	298788	4	Ferrule
5	A84754-1	1	Fuel line short w/ferrules
6	S387766-1	1	Prime bulb
7	A197752-1	1	Fuel line long w/clamp and ferrule
8	S459755	1	Fuel tank adapter
9	459034-1	1	Fuel tank
10	66252	1	Gasket
11	S459251	1	Fuel tank cap w/vent screw
	S409752	1	Fuel line complete

Fuel Tank and Line



Specifications

HORSEPOWER -- 6 B. I. A. Certified Brake H. P. at 5000 R. P. M.

ENGINE -- Two-Cycle, Twin Cylinder, Alternate Firing.

BORE AND STROKE -- 1 7/8" x 1 5/8".

DISPLACEMENT -- 8.99 Cubic Inches.

CARBURETOR -- Float Feed.

CONNECTING ROD -- Die Cast Aluminum - Steel Liners With Needle Bearings at Crankshaft.

RECOMMENDED OPERATING RANGE -- 4500-5500 R. P. M.

FUEL TANK -- Separate Steel Tank.

PROPELLER SHAFT AND DRIVESHAFT -- Stainless Steel, Hardened, Ground and Polished.

PROPELLER -- Aluminum Alloy - 7" Diameter, 4 3/4" Pitch, Right Hand Rotation.

COOLING -- Water Cooled - Positive Displacement Type Water Pump.

CRANKSHAFT -- Forged Nickel Steel. Ball Bearings at Upper Main. Full Complement Needle Rollers at Center Main.

TRANSOM HEIGHT -- 15".

Lubrication Chart

<u>PART NAME</u>	<u>TYPE OF LUBRICANT</u>	<u>HOW OFTEN</u>
Starter Pinion Gear	SAE 30 Motor Oil	If Starter Operation Becomes Sluggish
Starter Spool Bearings	SAE 30 Motor Oil	If Starter Operation Becomes Sluggish
Throttle Cam Follower	SAE 30 Motor Oil	Twice Each Season, Oftener if Required
Magneto Control Shaft Bearings	SAE 30 Motor Oil	Twice Each Season, Oftener if Required
Clamp Screws	SAE 30 Motor Oil	Twice Each Season, Oftener if Required
Stern Bracket Pivot Bolt	SAE 30 Motor Oil	Twice Each Season, Oftener if Required
Gear Housing	Wards Sea King Hypoid Outboard Gear Oil	Every 30 Hours, Oftener if Required
Fuel Line Coupler Release Ring	SAE 30 Motor Oil	Twice Each Season, Oftener if Required

GREASE FITTINGS -- Grease Fittings Are Provided at Critical Points Where Bearing Surfaces Are Not Exposed Externally. Using an Automotive Type Grease Gun and Lubricant, Grease Twice Each Season or Oftener if Required.

Special Adjustments

BREAKER POINT GAP -- .020".

SPARK PLUG -- Champion L-4-J, Gap .030".

ADJUSTING STEERING TENSION -- Steering Tension Can Be Adjusted by Turning the One (1) Steering Friction Adjusting Screw, Illustration 13, Page 11, in the Direction Required.

POINT OF THROTTLE OPENING -- Set the Position of the Throttle Cam Follower Roller, Illustration 48, Page 7, So That the Throttle Shutter in the Carburetor Will Be CLOSED and All Slack REMOVED from the Linkage When the Throttle Cam Follower is on the Throttle Pick Up Point Mark on the Throttle Cam Plate.

FLYWHEEL NUT -- Torque to 40-50 Foot Pounds.